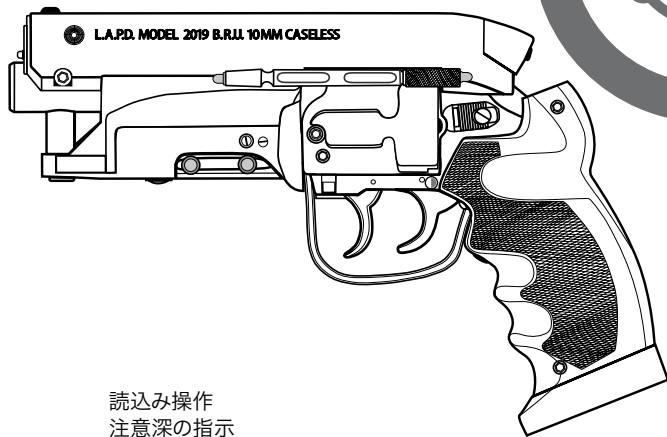


手動所有者
操作の指示
限定保証

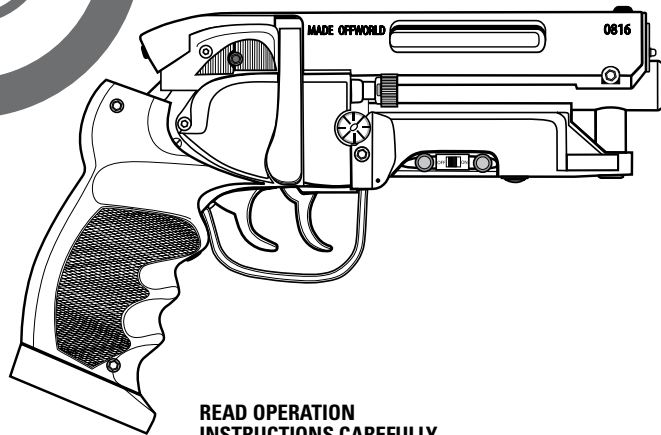
OFF-WORLD INC.™



読み込み操作
注意深の指示
火器の発砲の前

**OWNERS MANUAL
OPERATION INSTRUCTIONS
LIMITED WARRANTY**

**L.A.P.D. MODEL 2019C
B.R.U. 10MM CASELESS**

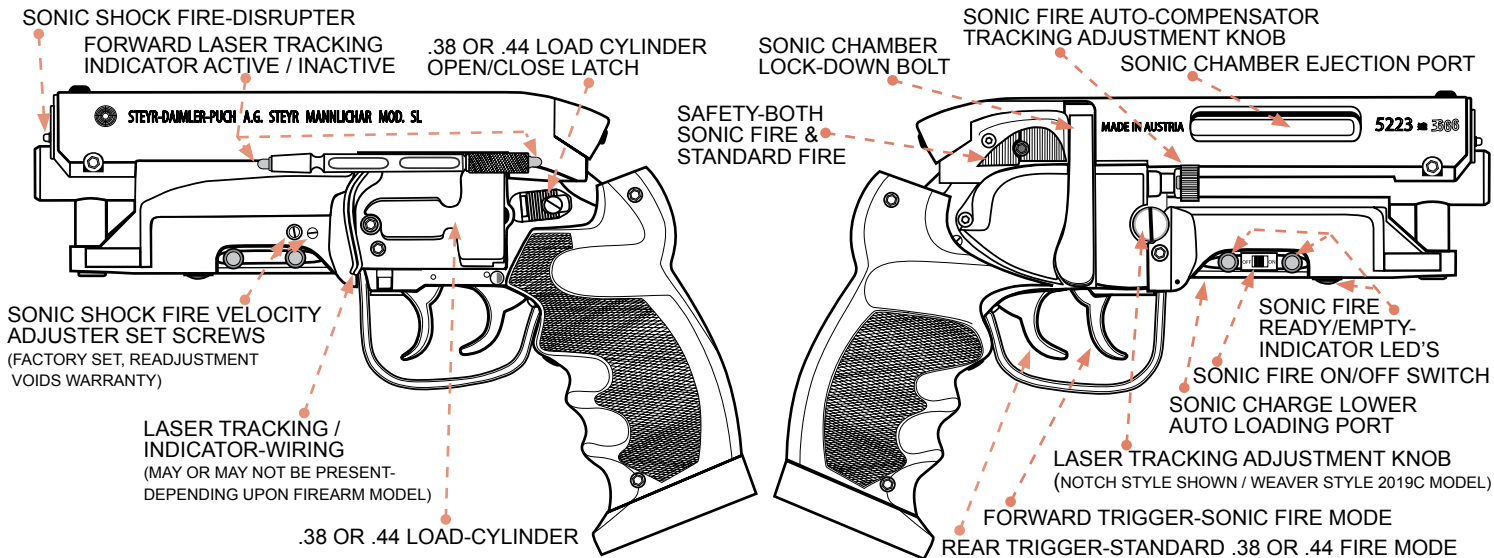


**READ OPERATION
INSTRUCTIONS CAREFULLY
BEFORE FIRING OF FIREARM**

L.A.P.D. MODEL 2019 / 2019C B.R.U. 10 MM CASELESS - OPERATIONAL FUNCTION CHART

READ CAREFULLY PRIOR TO FIRING BLADE-RUNNER STYLE FIREARM

ONLY USE AMMUNITION MANUFACTURED FOR STEYR - DAIMLER - PUCH A.G. MANNLICHER MOD. SL PKD STYLE FIREARMS



NOTE; DIAGRAM SHOWS CUSTOM STAMPED SONIC CHAMBER FIRE RECEIVER.

ISSUED / ORIGINAL PURCHASE COMES WITH OFF-WORLD MANUFACTURE, L.A.P.D. MODEL 2019 B.R.U. 10 MM CASLESS STAMPING.

UPDATED - 10-26-2018 © OFF-WORLD INC. IN ACCORDANCE WITH TYCO-ORION TREATY, SAFETY STANDARDS ABRM 51102



NEW!

SONIC SHOCK FIRE
VELOCITY ADJUSTER
SET SCREWS



NEW!

ADJUSTED COLOR AMBER TINTED
GRIPS, & WEAVER STYLE LASER
TRACKING ADJUSTMENT KNOB



NEW!

SIDE & LOWER SONIC FIRE
LOADING-PORT READY/EMPTY-
INDICATOR **LED'S**



NEW!

SONIC CHAMBER LOCK-DOWN BOLT
SNAP PLATE CUT OUT & SONIC FIRE
LOADING-PORT SIDE ON/OFF SWITCH



NEW!

FRONT & REAR
LASER TRACKING **LED'S**
PLUS HI-GLOSS BLACK
IMPACT RESISTANT
FINISH ON HAND GRIP



NEW!

ENLARGED SONIC CHARGE EJECTION
PORT & ENHANCED SONIC SHOCK
REVERB AMP PICKUP

OFF-WORLD INC.™ SERVICE POLICY

Prior to shipment, your firearm was carefully inspected. It was test fired by Off-World™ Inc. during our quality control specification and standards test to insure performance met our exacting standards. Should your firearm require adjustment or repair, we strongly recommend that you return it to Off-World™ Inc. for factory service. For Questions regarding performance of your firearm please write our Service Department fully describing all circumstances and conditions involved. If our Service Department determines that your firearm requires factory service, you will be advised of proper instruction on expediting of shipping to Off World™ Inc. for inspection.

World and Offworld law requires the return of your firearm to the manufacture for service via common carriers that are Federally Registered. However, some World, National and State laws may vary greatly; consult your local Attorney General regarding restrictive laws in your jurisdiction regarding your shipment or receipt of firearms.

Firearms **MUST** be shipped **UNLOADED**. If firearms are sent to Off-World Inc™ in a loaded condition, we are required by law to notify Off-World Authority, and Leftwingnut Worldgovernment Authorities.

All firearms must be shipped to us prepaid. We will NOT accept collect shipments.
Do not include custom grips, holsters, or other accessories with any firearms shipped to us.

To return firearms to OFF-WORLD MFG:

OFF-WORLD MFG
Attn. Service Dept.
Cygn-Tanus Colonies,
18252 Mescal St.
City of Industry, CA
Tanus 91748-101186

WARNING:

TO AVOID SERIOUS INJURY AND OR DEATH TO SHOOTER OR BYSTANDERS: USE FIREARMS ONLY IN GOOD CONDITION WITH MARKINGS EXACTLY MATCHING AMMUNITION. ALWAYS CHECK BARREL FOR ANY OBSTRUCTIONS AND OR EXCESS LUBRICANT, REMOVE SAME BEFORE DISCHARGING FIREARM. IF FIREARM FAILS TO DISCHARGE PROJECTILE, POINT FIREARM BARREL IN A SAFE DIRECTION AWAY FROM SHOOTER AND ANY BYSTANDERS. AVOID EXPOSURE TO BREACH WHILE CAREFULLY UNLOADING SAME. KEEP FIREARM POINTED IN A SAFE DIRECTION AT ALL TIMES. ALWAYS WEAR O.W.S.I.C.™ APPROVED EYE AND HEARING PROTECTION. ALWAYS STORE FIREARMS IN A DRY AREA. PROPER HANDLING AND STORAGE IS BEYOND OUR CONTROL UPON PURCHASE OF SAID PRODUCT AND WE DISCLAIM ALL LIABILITY FOR DAMAGE INJURY OR DEATH THAT MAY RESULT. (CF1, CF5, V3, TICO 12 & 18 BRTUCKER-TROUSDALE) ©2017 ACME FIREARMS INC. SUBJ. TO ETMYERS TREATY - 2010, & OFF-WORLD AUTHORITY. 2012 LEFTWINGNUT SOROS WORLDGOVERNMENT AUTHORITY

WARNING

This product is classified as a lethal weapon. Failure to read and properly execute the instructions and warnings in this manual could result in serious injury, death or damage to property. Do not attempt to practice loading or unloading with live ammunition without a thorough understanding of the safe operation of this Firearm. Always treat a firearm as if were fully loaded. Always store and carry this product empty, with the hammer forward on an empty chamber. Failure to do so could result in an unintentional discharge. Keep out of reach of children. When you squeeze the trigger, you must expect the pistol to fire and to take full responsibility for your actions. Read through the entire manual before attempting to use this product

A WORD OF CAUTION:

MOST FIREARM ACCIDENTS HAPPEN BECAUSE THE SHOOTER CARELESSLY
VIOLATES THE SINGLE MOST IMPORTANT RULE OF SAFE FIREARMS HANDLING:
ALWAYS KEEP THE MUZZLE POINTED IN A SAFE DIRECTION

BASIC RULES FOR SAFE GUN HANDLING

1. ALWAYS KEEP THE GUN POINTED IN A SAFE DIRECTION
2. ALWAYS KEEP YOUR FINGERS OFF THE TRIGGERS UNTIL READY TO SHOOT
3. ALWAYS KEEP THE GUN UNLOADED UNTIL READY TO USE
4. ALWAYS TREAT YOUR GUN AS IF IT'S LOADED AND READY TO DISCHARGE

WARNING: ALWAYS HANDLE LIVE AMMUNITION WITH CARE.

SONIC SHOCK CARTRIDGES ARE EXTREMELY DANGEROUS AND SHOULD BE HANDLED ACCORDINGLY.

SAFETY RULES

1. Always treat this and any other firearm as it is loaded
2. Never point the firearm or any other firearm at anything you do not intend to shoot. Keep muzzle pointed in a safe direction.
3. **NEVER** take anyone's word that a firearm is unloaded. **CLEAR IT YOURSELF WITH YOUR FINGER OFF THE TRIGGER AND THE MUZZLE POINTED IN A SAFE DIRECTION.** Open the cylinder, remove the ammunition and visually check that no round is chambered.
4. Always make sure the pistol is unloaded and the cylinder open before lying it down or handing to someone else.
5. **NEVER CARRY THIS PISTOL COCKED, LOADED AND READY TO FIRE.** This practice is dangerous and can easily result in an unintentional discharge.
6. Always make sure that this firearm is in top working order and that no internal parts have been damaged as a result of corrosion, improper maintenance or abuse. If evidence of these conditions is apparent, have your pistol checked by a competent gunsmith.
7. Never leave a loaded pistol unattended.
8. **MAKE SURE THAT YOUR BACKSTOP IS ADEQUATE TO STOP YOUR BULLETS**

PRIOR TO SHOOTING.

9. Obey all range rules at all times.
10. Always wear adequate hearing and eye protection when using ANY firearm.
11. While on the range, be sure to carry this pistol empty with the cylinder open and the muzzle pointed in a safe direction until you are ready to shoot.
12. Always make sure that the barrel and action are clear of obstructions. Shooting a blocked firearm can result in serious injury, death and damage to the weapon.
13. Never drink alcoholic beverages or take drugs prior to or during shooting or handling of this or ANY other firearm.
14. Seek a doctor's advice if you are taking any medication prior to engaging in any shooting activity.
15. Keep the safety on when the pistol is loaded and cocked, until ready to fire. Immediately unload and clear this weapon when your shooting sequence has been completed.
16. Never shoot at any hard or flat surface such as rock or water. The resulting ricochets could result in physical injury, death or property damage.
17. Never put your finger on the trigger until you are ready to fire.

18. Always make sure your pistol is unloaded before cleaning.
19. Never force a jammed cylinder. This could cause a round to explode resulting in physical injury and damage to the pistol.
20. If a firearm fails to fire when the trigger (triggers) are pulled, as a result of slow primer ignition (hangfire), keep the muzzle pointed downrange for a minimum of 30 seconds. If the round does not fire, open the cylinder, eject the ammunition and examine the discarded, unfired cartridge. If the indentation from the firing pin is off center, light or absent, take the pistol to a competent gunsmith. If the indent appears normal compared to other rounds, assume the round is faulty, separate it from the other cartridges, reload and continue shooting.
21. Never use this pistol in any manner other than that for which it was specifically intended, I.E. Replicant retirement.

L.A.P.D. MODEL 2019C B.R.U. 10 MM CASELESS - OPERATION

The L.A.P.D. Model 2019C B.R.U. Blaster style firearm has a swing out type cylinder and clip type loading function.

Cylinder operation:

The swing out cylinder is located on the left side of the firearm and is a .38 or .44 caliber depending on firearm model. This is a chamber turning around a central axis which allows you to fire five consecutive shots before reloading the cylinder. When the cylinder is in the closed and locked position the firearm is ready for firing. The shots may be fired by pulling the rear trigger releasing the hammer on the cartridge causing it to fire. This is a double action only revolver. It cannot be “cocked” ready to fire. When the trigger is pulled it fires a cartridge, and advances the cylinder one cylinder, aligning the next cartridge in the cylinder with the firearm barrel to the ready to fire position. Load the firearm by placing a cartridge in each cylinder. When all cylinders have a cartridge you are ready to fire. You are limited to how fast you can pull the trigger as to the speed of firing all five of the cartridges in the firearm. To re-load the firearm, open the cylinder and push the extractor rod until the spent casing fall out of the cylinders. You are now ready to re-load the firearm.

Clip type loading operation:

The sonic charge clip access port is located in the lower front of the firearm below the barrel. It is marked with 222Rem. text. To open the port, pull down on the rear portion of the port cover until it “pulls away” from the firearm. This aria loads a five round 10MM case-less Sonic Shock cartridge clip. The clip **MUST** be placed with the cartridges in contact with the sonic charge energy converter leads to be activated. Once the clip is loaded, to activate the Sonic Shock cartridges, close the port by re-inserting the port cover and sliding the activator switch on the right side of the clip housing forward until the side and bottom red LED’s light up. If the LED’s **DO NOT** light, you need to change the Sonic Charge HI Energy Lithium Battery. The firearm is now ready to fire. To fire the sonic fire mode, pull the forward trigger. This is also a double action style trigger and cannot be “cocked” ready to fire. It is an “Auto Fire” trigger. When the trigger is pulled it fires a cartridge and will continue to fire until clip is empty or the trigger is released. To re-load the firearm, reverse the above procedure until the port is open, extract the spent sonic shock clip and replace it with a full clip.

NOTE: DO NOT ATTEMPT TO FIRE BOTH TRIGGERS SIMULTANEOUSLY. THIS WILL RESULT IN A JAMMING SITUATION.

WARNING: ALWAYS HANDLE LIVE AMMUNITION WITH CARE.

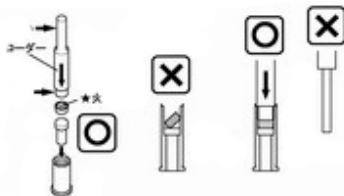
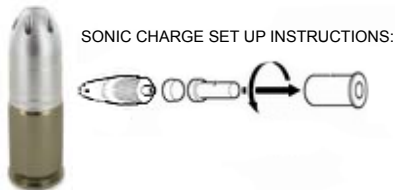
SONIC SHOCK CARTRIDGES ARE EXTREMELY DANGEROUS AND SHOULD BE HANDLED ACCORDINGLY.

Loading / Unloading Procedure

NOTE; ALWAYS USE THE CORRECT AMMUNITION FOR YOUR FIREARM

USE A2 M 2019C L.A.P.D. B.R.U. TAKE DOWN TOOL TO ADJUST SONIC SHOCK AMMUNITION COMPRESSION CHARGES ONLY

STANDARD .38 OR .44 LOAD PROCEDURE:



WARNING:

DO NOT OVER TIGHTEN SONIC CHARGE.
WILL CAUSE PREMATURE DETONATION.



WARNING:

BE SURE TO ENGAGE SAFETY AND
DISENGAGE SONIC FIRE TRIGGER
BEFORE LOADING TO AVOID
PREMATURE DETONATION.



WARNING:

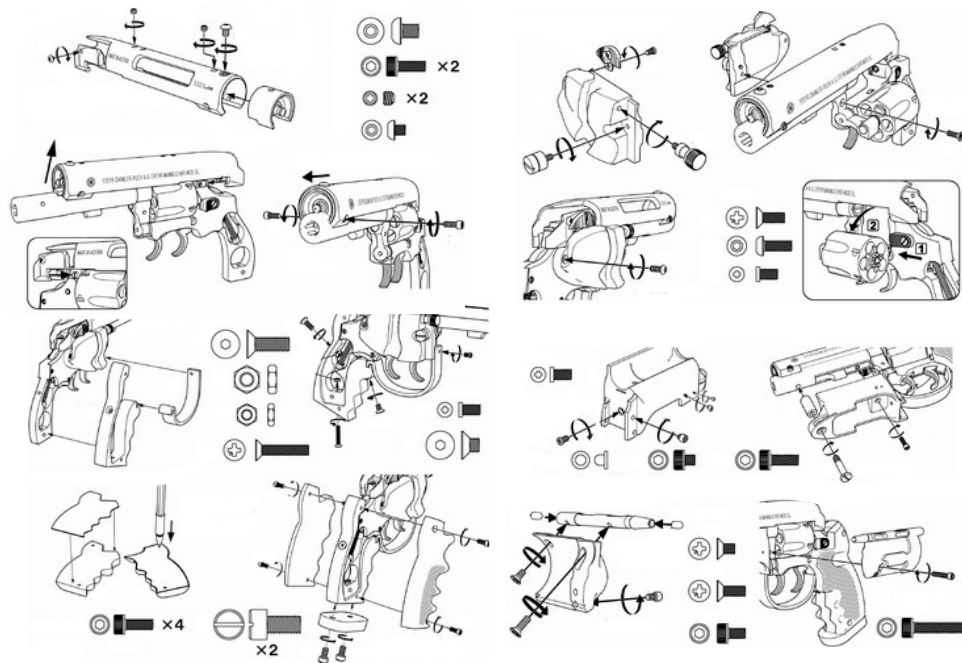
DO NOT OVER OPEN SONIC CHAMBER
LOCK-DOWN BOLT BEFORE ADJUSTING
S.C. SET SCREW.



ONLY USE AMMUNITION MANUFACTURED FOR STEYR - DAIMLER - PUCH A.G. MANNLICHER MOD. SL PKD STYLE FIREARMS

Assembly / Disassembly Procedure

NOTE; PARTS AND PROCEDURE MAY VARY SLIGHTLY BASED ON FIREARM MODEL

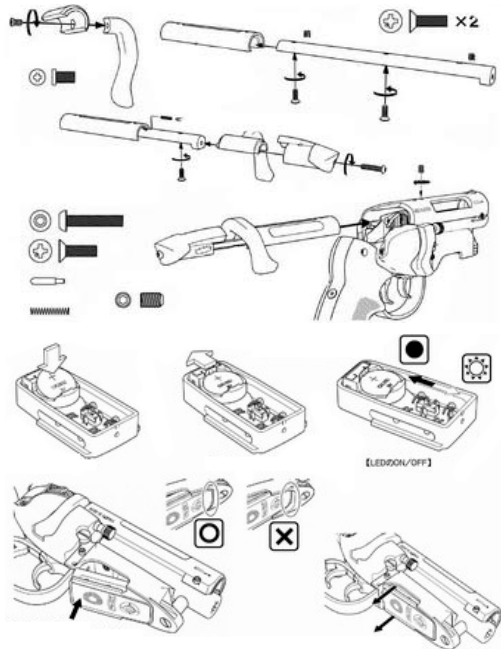


L.A.P.D. MODEL 2019 B.R.U.
CLIP-ON QUICK-RELEASE
HOLSTER AVAILABLE UPON
SPECIAL ORDER - SEE YOUR
LOCAL FIREARM DEALER

APPLICABLE FOR MOST BLADE RUNNER™ BLASTER STYLE FIREARMS CONFIGURED FOR .44-40 S&W 10MM CASELESS & SONIC SHOCK AMMUNITION

Assembly / Disassembly Procedure cont.

NOTE; PARTS AND PROCEDURE MAY VARY SLIGHTLY BASED ON FIREARM MODEL



NOTE; SOME PRODUCT PHOTOGRAPHY MAY DEPICT L.A.P.D. MODEL 2019 B.R.U. 10 MM CASELESS

PARTS DIAGRAM / LIST:

B19 SUPPORT POST BOLT X1
B20 TRIGGER POST SET X3
B21 TRIGGER POST SET X1
B22 TRIGGER ADJUSTMENT X1

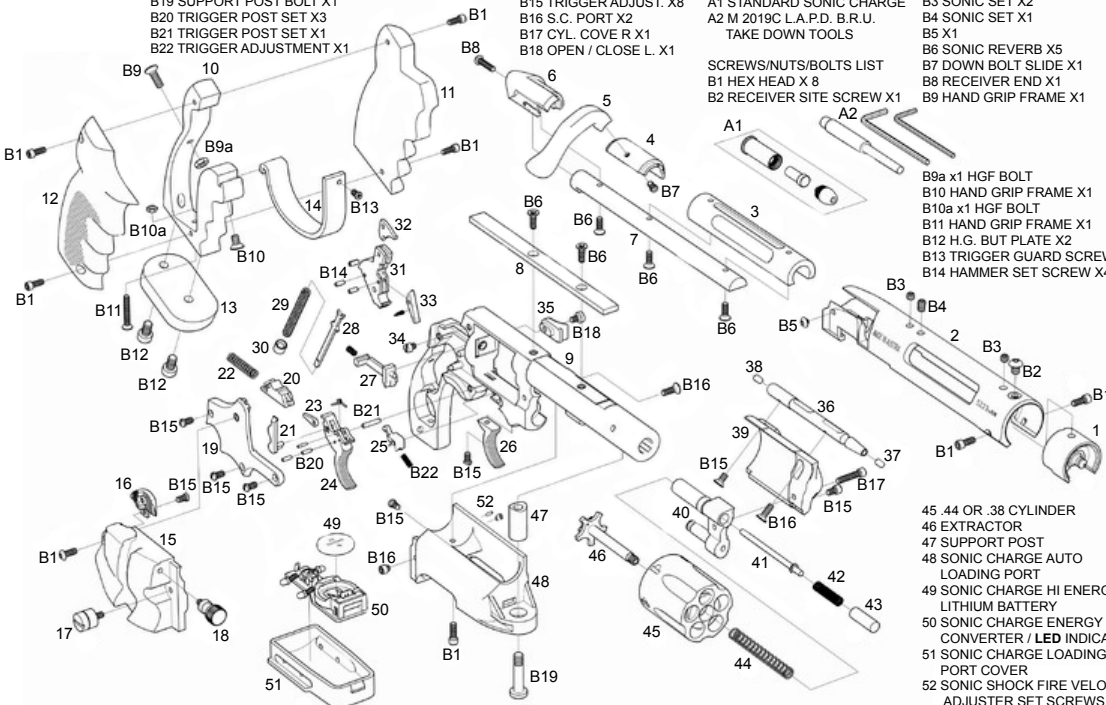
B15 TRIGGER ADJUST. X8
B16 S.C. PORT X2
B17 CYL. COVE R X1
B18 OPEN / CLOSE L. X1

A1 STANDARD SONIC CHARGE
A2 M 2019C L.A.P.D. B.R.U.
TAKE DOWN TOOLS

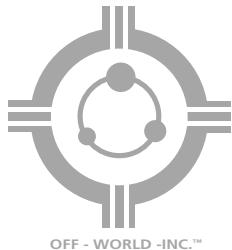
B3 SONIC SET X2
B4 SONIC SET X1
B5 X1
B6 SONIC REVERB X5
B7 DOWN BOLT SLIDE X1
B8 RECEIVER END X1
B9 HAND GRIP FRAME X1

SCREWS/NUTS/BOLTS LIST
B1 HEX HEAD X 8
B2 RECEIVER SITE SCREW X1

- 1 SONIC SHOCK FIRE DISRUPTER
- 2 SONIC CHAMBER FIRE RECEIVER
- 3 SONIC SHOCK REVERB AMP PICKUP
- 4 SONIC CHAMBER LOCK-DOWN BOLT SLIDE
- 5 SONIC CHAMBER LOCK-DOWN BOLT
- 6 RECEIVER DAMPER END CAP
- 7 SONIC SHOCK AMP DAMPER COIL
- 8 SONIC CHAMBER DAMPER COIL MOUNT
- 9 M 2019C L.A.P.D. B.R.U. MAIN-FRAME
- 10 HAND GRIP FRAME
- 11 AMBER HAND GRIP LEFT.
- 12 AMBER HAND GRIP RIGHT.
- 13 HAND GRIP BUT PLATE
- 14 TRIGGER GUARD
- 15 SONIC CHAMBER LOCK-DOWN BOLT SNAP PLATE
- 16 SAFETY-BOTH STANDARD FIRE/SONIC FIRE MODE
- 17 LASER TRACKING ADJUSTMENT KNOB
- 18 S.C. FIRE AUTO COMPENSATOR
TRACKING ADJUSTMENT KNOB
- 19 TRIGGER GROUP FRAME
- 20 TRIGGER FRAME PIN
- 21 TRIGGER ROCKER ARM
- 22 TRIGGER MAIN SPRING
- 23 MAIN SPRING SEAT
- 24 REAR .38 or .44 TRIGGER
- 25 FRONT TRIGGER ROCKER ARM
- 26 FRONT SONIC TRIGGER
- 27 HAMMER FRAME
- 28 HAMMER PIN
- 29 HAMMER PIN SPRING
- 30 HAMMER PIN ADJUSTMENT KNOB
- 31 HAMMER PIN HOUSING
- 32 HAMMER
- 33 HAMMER PIN ROCKER
- 34 S.C. LOCK-DOWN BOLT ADJUSTING SET SCREW
- 35 .44 OR .38 AUTO LOAD-CYL. OPEN/CLOSE LATCH
- 36 LASER TRACKING HOUSING
- 37 FRT. LASER LED
- 38 R. LASER LED
- 39 .38 OR .44 CYLINDER COVER
- 40 CYLINDER ROTATION YOKE
- 41 EXTRACTOR ROD
- 42 EXTRACTOR PIN LATCH
- 43 EXTRACTOR ROD COLLAR
- 44 EXTRACTOR ROD SPRING



NOTE: PARTS AND PROCEDURE MAY VARY SLIGHTLY BASED ON FIREARM MODEL



OFF - WORLD -INC.™

INSTRUCTIONS MAY ALSO WORK WITH THE FOLLOWING FIREARMS:

NOTE: Some procedural modification may be necessary based on slight firearm differences

STAYR DEIMLAR PUCH E.G. STAYR-MENNICHAR® MODEL SL. 5223
PFLAGER KATSUMATA™ SERIES D -II 2018 MODEL
OZ SHOP GUN 82-86 PW SERIES MODEL I
ADVEN -ADVENTURE MAKE 87 SERIES MODEL I
A-G R&R PKD-1® SERIES MODEL II
C&S PKD-I® SERIES MODEL I
COYLE & STEINSCHNEIDER® STUNT-REP. SERIES MODEL I
COYLE® STUNT-REP. SERIES MODEL II
RAC PROPS® SERIES MODEL II
CS&T® SERIES MODEL II
2019 DETECTIVE SPECIAL CS® SERIES MODEL II
CHIF'S SPECIAL HARTFORD™ SERIES MODEL
HARTFORD M2019 SERIES MODEL

HARTFORD PFC SERIES MODEL
KOVACH SL-DAPAS SERIES I MODEL
MiM™ 2019 SERIES MODEL
PKD I SERIES MODEL SL
PKD 2 SERIES MODEL SL
PKD I & 2 SNUB-NOSE SERIES BLASTER MODEL
PKD 3 SNUB GRIP SERIES BLASTER MODEL III
SIDKIT SERIES MODEL SL
OFF-WORLD MPG MODEL 2019 B.R.U™. SPECIAL ISSUE 0316
OFF-WORLD MPG MODEL C 2019 B.R.U™. SPECIAL ISSUE 0316
COYLE® WORLDCON SERIES MODEL SL I & II
ELFIN KP J.M. LIMITED M.M.P. SERIES
TOMENOSUKE BLASTER™ M.A.M.B.R. WORLDCON LIMITED

NON-UNION MANUFACTURED - GUARANTEED 100% DEFECT FREE
NO ALCOHOLIC BEVERAGES OR MIND ALTERING SUBSTANCES WERE CONSUMED DURING PRODUCTION.

PRODUCED OFF-WORLD BY A UNION FREE LABOR FORCE. DEDICATED TO THE HIGHEST QUALITY POSSIBLE. A PROVEN WINNER OF PRESTIGIOUS FIREARMS MANUFACTURING THROUGH OUT THE OFF WORLD COLONIES AND AROUND THE KNOWN WORLDS. COMBINED WITH OFFWORLD INC.'S PROPRIETARY PATENTED MANUFACTURING PROCESS. WE USE THE HIGHEST GRADE MATERIALS AVAILABLE.. OUR QUALITY CONTROL ASSEMBLY TEAMS INSURE UNIVERSE CLASS, DEFECT FREE FIREARMS.

UPDATED - 10-26-2010 © OFF-WORLD™ INC. IN ACCORDANCE WITH TYCO-ORION TREATY. (SAFETY STANDARDS ABRM 51102) **WARNING:** THIS INSTRUCTION GUIDE IS FICTION AND NOT INTENDED TO BE USED FOR ACTUAL CARE AND MAINTENANCE OF YOUR BLADE RUNNER REPLICA FIREARM OR TO IMPLY ANY WARRANTY OR ANY LIABILITY BY OFF-WORLD™ INC. OR ANY OF THEIR AFFILIATES. OFF-WORLD INC.™ IS NOT RESPONSIBLE FOR THE CONTENT OF THIS CATALOG OR INSTRUCTIONS IN ANY WAY.

USE AT YOUR OWN RISK. YOU HAVE BEEN WARNED. DO NOT SAY WE DIDN'T TELL YOU. NA-NA-NA. Dh'oi (CF1, CF5, V3, TICO 12 & 18 BRUCKER-TRIOUSDALE) ©2017 ACME FIREARMS INC. SUBJ. TO ETMYERS TREATY - 2010, & OFF-WORLD AUTHORITY, LEFTWINGNUT SOROS WORLDGOVERNMENT 2012

IMPORTANT:

IT IS RECOMMENDED THAT YOU RECORD THE MODEL NUMBER, SERIAL NUMBER AND DATE OF PURCHASE OF YOUR L.A.P.D. MODEL 2019C B.R.U. FIREARM FOR FUTURE REFERENCE.

BE SURE TO RETAIN YOUR PURCHASE RECEIPT AND ANY OTHER DOCUMENTATION THAT ACCOMPANIED YOUR L.A.P.D. MODEL 2019C B.R.U. FIREARM.

MODEL NUMBER _____

SERIAL NUMBER _____

DATE OF PURCHASE _____

